

SEAD

Sustainable Environment – Actionable Data

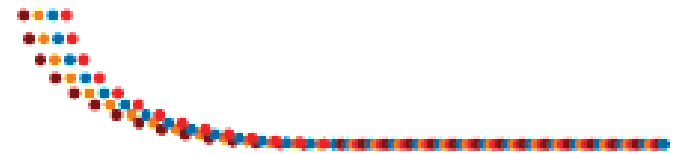
Margaret Hedstrom, PI (Michigan)

Praveen Kumar, co-PI (Illinois)

Jim Myers, co-PI (RPI)

Beth Plale, co-PI (Indiana)

Ann Zimmerman, co-PI (Michigan)

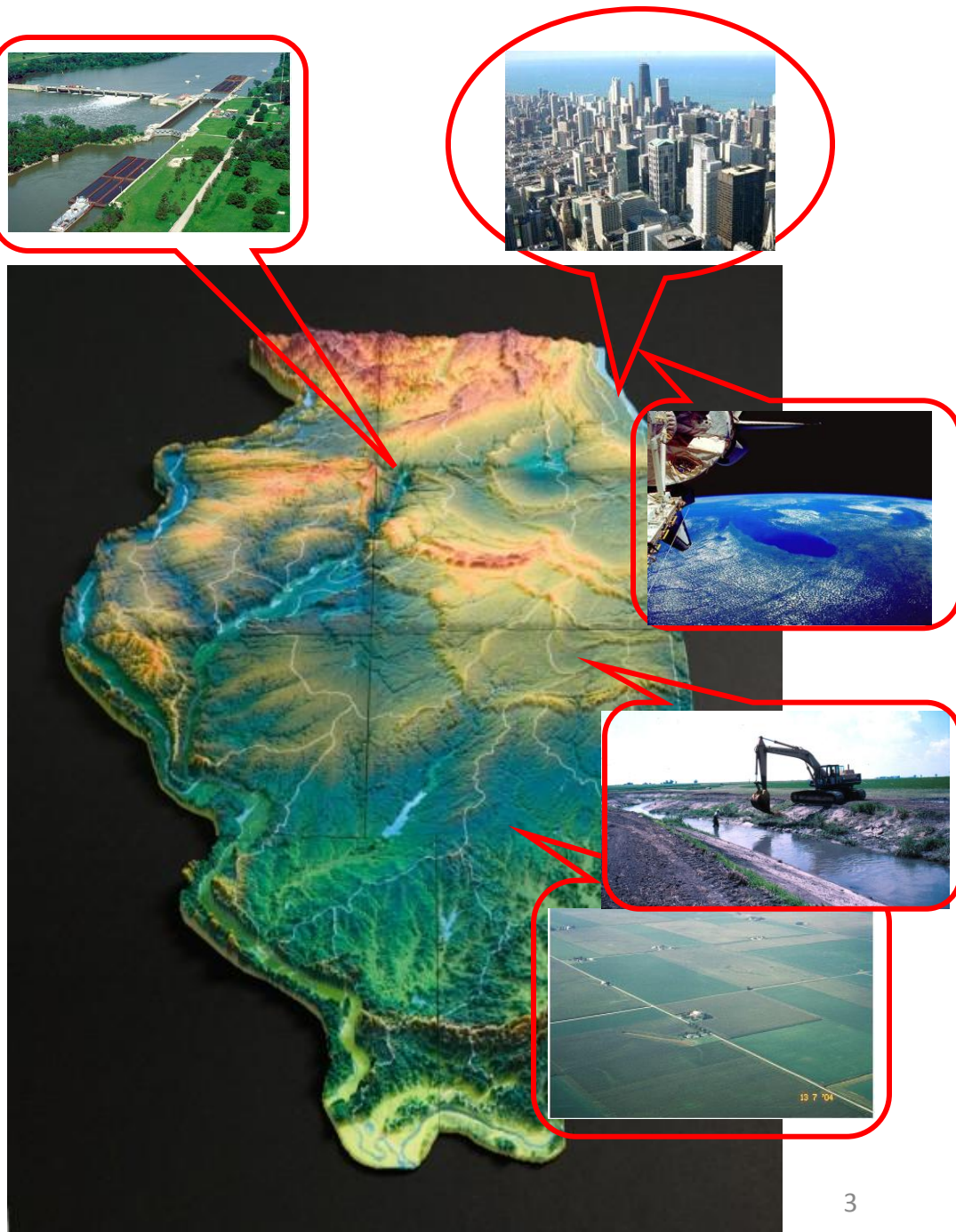
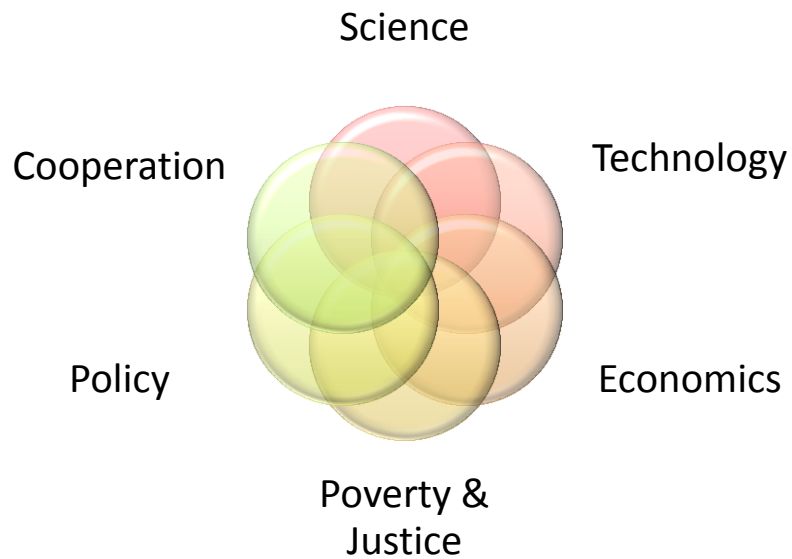


Sustainable **E**nvironment — **A**ctionable **D**ata

SEAD's Goals

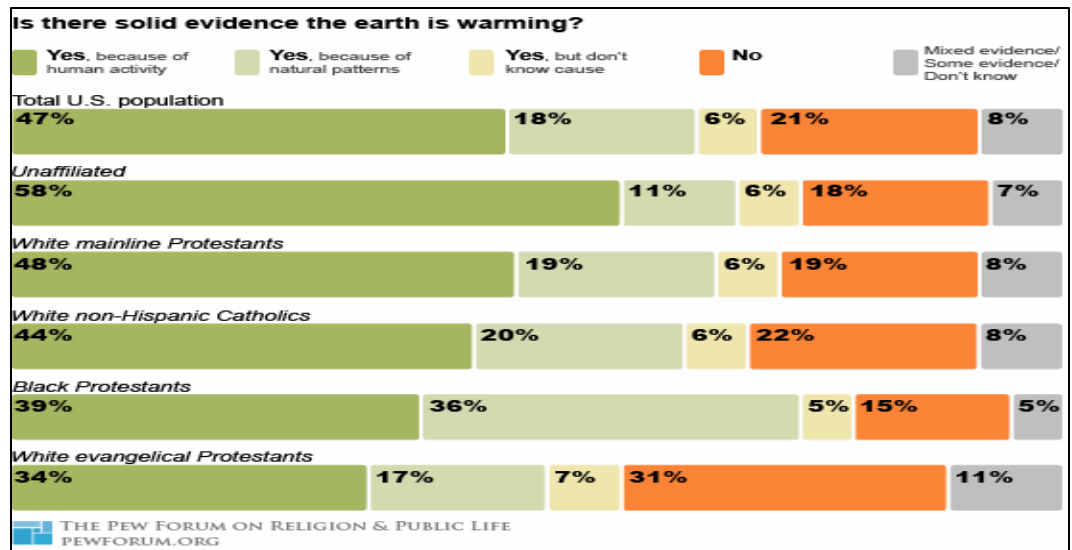
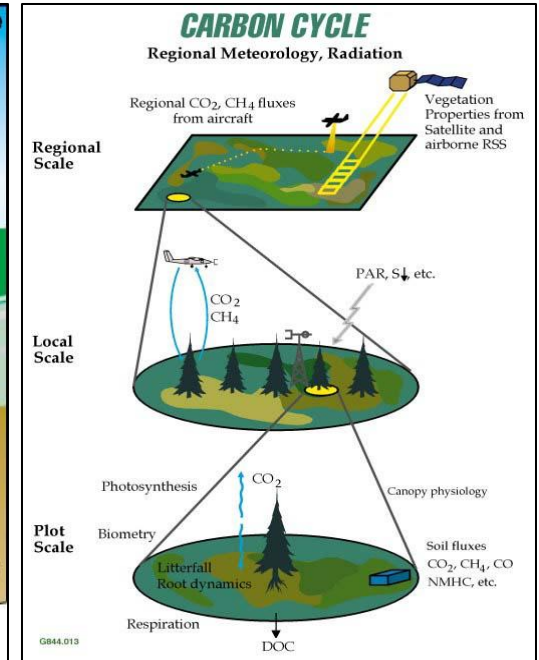
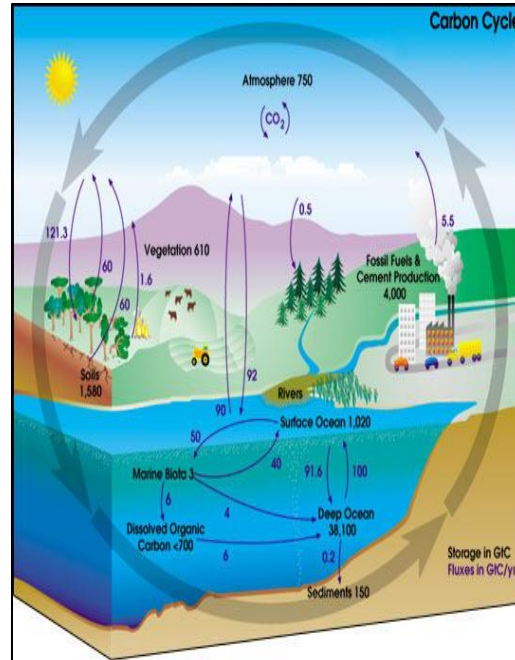
- Provide data services that address the needs of researchers in sustainability science
- Integrate these services into an generalizable “Active and Social Curation” infrastructure suited to data in the “long tail”
- Develop capabilities to package and migrate the most valuable datasets to a federated repository infrastructure for long-term preservation

Sustainability Science



Data challenges

- Small and derived data sets
- Heterogeneous data
- Multiple sources of data
- Short-lived data with long-term value
- Value of data grows when combined & integrated



SEAD's Strategy

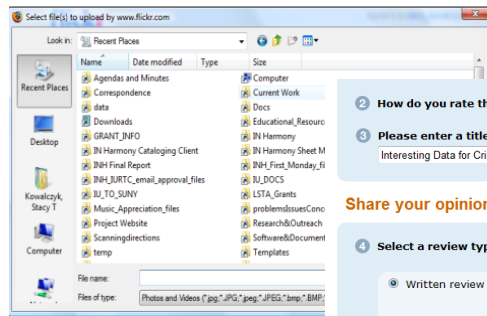
- Leverage social media for discovery of data, interest, and expertise
- Move data curation upstream in the data life cycle
- Involve domain scientists in setting priorities for evolution of data and services
- Take advantage of existing infrastructures (Institutional Repositories, ICPSR) for long-term preservation

Active Curation Model

Active Curation

Social Media

Workflows



Data

- 2 How do you rate this item? ★★☆☆
- 3 Please enter a title for your review:
Interesting Data for Criminologists

Share your opinion

4 Select a review type

- ☒ Written review ☐ Video review

Type your review in the space below

Insert a product link (What's this?)

Metadata

Customer Reviews

1 Review
2 stars (1)
4 stars (0)
3 stars (0)
2 stars (0)
1 star (0)

Average Customer Review
★★★★★ (1 customer review)

Most Helpful Customer Reviews

★★★★★ Think of It as a 2-1/2 LB Stimulus Package, February 25, 2009

By Yvonne (Bethesda, MD) - See all my reviews

Ever encounter a concept so revolutionary that you wonder why every & Criminal Detection (CRC Press 2009), by Christopher Westphal, is like Admittedly, only the few, the proud, and the discerning might dare to l

Seriously, if the content in Data Mining's pages (think of it as a 2-1/2 l Oprah, and a certain researcher at the Library of Congress, we could li peaceful prosperity - raising our quality of life while saving (as opposed you like anything at all about NumB3rs, or even NCIS (the most-viewed from Baywatch), CSI, or shows of that ilk - you owe yourself a crack a workout, and impress the heck out of onlookers. Not to mention which Memorial Fund, which speaks well for the author's motives on more tha

Comment | Parnalok | Was this review helpful to you? Yes No

Share your thoughts with other customers: Create your own review

Review Rating Commenting

Comments on this set

heavy says:
good idea here
Posted 12 months ago | permalink

Jenesis says:
You should get a photo of the cylindrical "over easy" egg that McDonald's uses for the Egg McMuffin.
Posted 12 months ago | permalink

Sebastian Waters says:
hahaha, very nice idea and interesting yummy photos
Posted 12 months ago | permalink

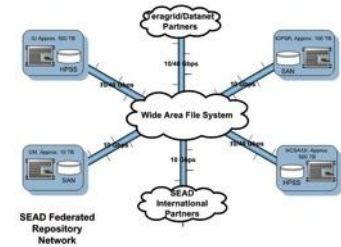
linchong88 says:
this is a great series of photos.
Posted 12 months ago | permalink

crystal.e says:
love this series. the cranberry sauce is so iconic.
Posted 12 months ago | permalink

aloha nico says:
love this. the ramen looks as though you opened the package to quickly and upended everything.

SEAD: Leveraging Existing Resources

- Cyberinfrastructure
 - IU Data Capacitor/HPC Capabilities
 - UIUC/NCSA HPC Capabilities
 - Rensselaer CCNI Capabilities
- Repositories
 - UM Deep Blue
 - IU ScholarWorks
 - ICPSR Repository
 - UIUC IDEALS



SEAD 18 Month Prototype Targets for Cyberinfrastructure

- Domain Engagement
 - Requirements derived from researchers
 - Use Cases
- Active and Social Content Curation
 - Pilot Active Content Repository, VIVO deployments
 - Exemplar services for Data Ingest, Discovery, Re-use, Curation
- CI for Long-term Access
 - Data model, protocol design/development
 - Pilot Federated Repository infrastructure

SEAD TEAM

University of Michigan: Margaret Hedstrom (UM PI), Ann Zimmerman (Co-PI and Project Manager), George Alter, Bryan Beecher, Charles Severance, Karen Woollams, Jude Yew.

Indiana University: Beth Plale (IU PI), Katy Borner, Robert H. McDonald, Kavitha Chandrasekar, Robert Ping, Stacy Kowalczyk, Robert Light.

University of Illinois: Praveen Kumar (UIUC PI), Rob Kooper, Luigi Marini, Terry McLaren, Zaman Aktaruzzaman.

Rensselaer Polytechnic Institute: Jim Myers (RPI PI), Ram Prasanna Govind Krishnan, Lindsay Todd, Adam Wilson.

Acknowledgments

SEAD is funded by the National Science
Foundation under cooperative agreement
#OCI0940824

